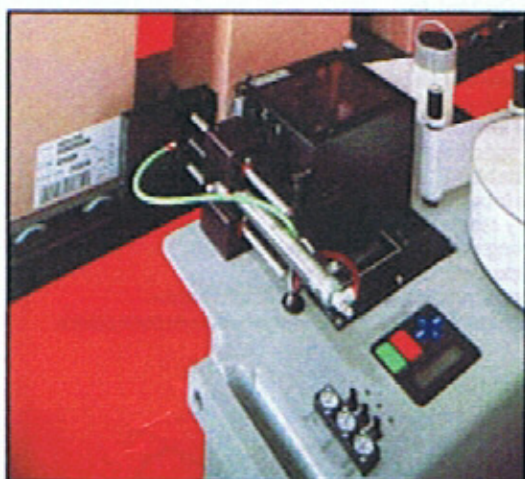




L2500PA Label Applicator

Print & Apply Label Applicator



Product Overview:

The Hoppmann L2500PA redefines the economics of printer applicators. You no longer have to sacrifice equipment integrity and industrial ruggedness when purchasing a cost-effective print and apply solution. Available with multiple printer options and a variety of application choices including tamp-on, blow-on and wipe-on, the L2500PA provides you with flexibility to meet all your labeling needs.

The solid aluminum-alloy casting protects key components from the rigors of industrial use while the heavy-duty design and construction provides non-stop reliability. Affordable and reliable - the Hoppmann L2500PA has set the new standard.

Product Features

- ▶ Industrial construction:
 - Solid aluminum-alloy casting provides structural integrity and protects key components
 - 1" x 2" (25mm x 51mm) U-arm structure eliminates vibration
 - Industrial powder coat finish
- ▶ No tool label roll changeover
- ▶ Standard 12" (305mm) label supply roll
- ▶ Tamp-on, blow-on, wipe-on and corner wrap application options
- ▶ Print speeds up to 12" (305mm) per second
- ▶ Placement accuracy of +/- 0.032" (0.81mm)
- ▶ 2 line x 20 character LCD display provides easy, menu-driven set-up
- ▶ Print standard bar code symbologies, graphics and human readable
- ▶ Multi-language menu display



Fujicon Engineering Pte Ltd

◆ No. 2, Tuas Link 1, Jurong Industrial Estate, Singapore 638590
◆ Tel: (65) 6863 4011 ◆ Fax: (65) 6863 4022 ◆ Email: info@fujicon.com.sg
www.fujicon.com.sg

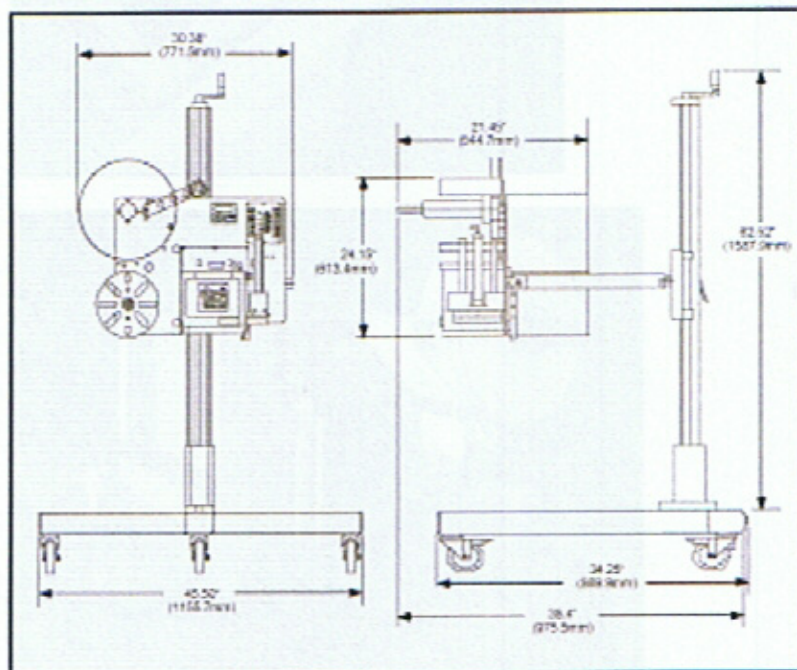


STANDARD APPLICATOR SPECIFICATIONS

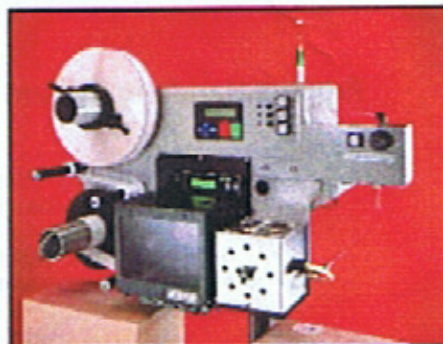
Labeling Rate (ppm)	150ppm* to 300ppm <small>*Dependent upon label & applicator</small>
Label Head Speed	12"/sec (305 mm/sec)
Accuracy	+/- .032" (0.81mm)
Controls	PC based control, operator interface w/ LCD display and membrane keypad
Label Drive Motor	High Torque Micro Stepper
Unwind Roll Diameter	12" (305mm) OD x 3" (76mm) ID
Product Detection	Photo Eye
Machine Interface	External Sub D. Connectors
Power Requirements	115/220 VAC, 50/60 Hz, 6 Amps
Air Requirements	80 psi @2.2 CFM
Environment	41-104°F, 5-40°C (25-85% Relative Humidity)
Agency Approvals	CE, UL and CSA

Available Upgrades and Options

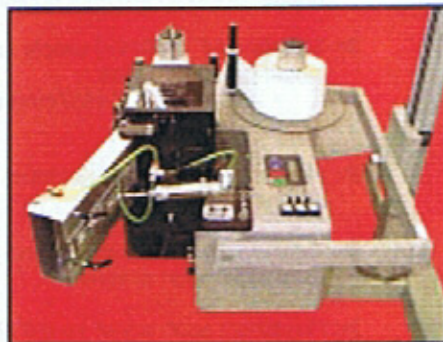
- Tamp-on, blow-on and wipe-on modules
- Tamp/blow module
- Soft-tamp module detects product location
- Extended length tamp modules (up to 24"/610mm)
- Label low level sensor and beacon fault upgrades
- Adjustable "T" stands and machine mount supports
- H-Frame with conveyor mount
- Horizontal positioning device
- Printer memory cards
- Printer interface modules
- Portable image loader
- Verifiers, scanners and ribbons
- Transport conveyors and systems
- Systems integration and special automation
- Centrifugal Feeders, Unscramblers and Accumulators



Hoppmann Corporation continually strives to improve its products. Therefore, Hoppmann reserves the right to change or discontinue specifications and designs shown in this brochure without notice and without incurring obligation. 00/00



Blow-On Module



Wipe-On Module

Fujicon Engineering Pte Ltd

◆ No. 2, Tuas Link 1, Jurong Industrial Estate, Singapore 638590

◆ Tel: (65) 6863 4011 ◆ Fax: (65) 6863 4022 ◆ Email: info@fujicon.com.sg

www.fujicon.com.sg