



TP-30 Trough Prefeeder

Designed for Fragile Parts Loading



Standard Features:

- All stainless steel construction
- DC variable speed motor
- Belting is FDA/USDA approved white 1-ply solid woven polyester fabric with 1/16" thick white PVC coating
- Panel mount controller card
- Mechanical style level sensor mounting kit – proximity sensor not included (P/N LEVSENPKG1)

Available Options:

- Washdown motor
- NEMA 1 encased controller
- Hopper covers
- Casters

Product Overview:

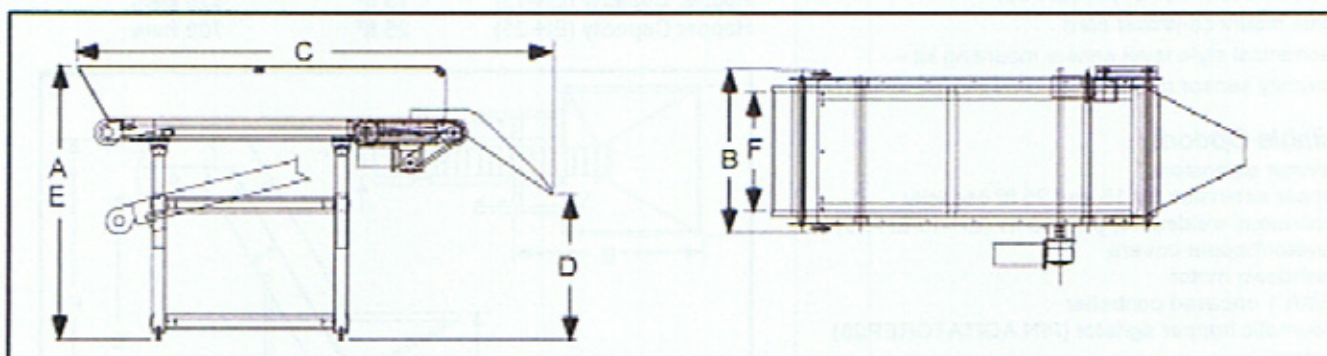
Hoppmann's standard TP-30 trough prefeeder is specially designed for handling a variety of fragile parts. The prefeeder features protective sides, food grade belt and variable speed control. Typical applications include those in which the parts may have a tendency to nest or tangle with each other, or may become damaged by a cleated belt style prefeeder.

Product Specifications:

	<u>ANSI</u>	<u>Metric</u>
A. Overall Height	63.5" ± 7.5"	1575 ± 190mm
B. Overall Width	47"	940mm
C. Overall Length	109"	2667mm
D. Dump Height (Adj.)	33.5" ± 7.5"	851 ± 190mm
E. Hopper Load Height (Adj.)	63.5" ± 7.5"	1613 ± 190mm
F. Belt Width	30"	762mm

Standard Models:

	<u>TPXX30XDSA</u>	<u>TPXX30XASA</u>
Part Number	DC	AC
Motor Style	90V	230-460V
Motor Voltage	1/2 hp	250 W
Horsepower	450 lbs.	204 kg
Total Equipment Weight	30 feet ³	850 liters
Supply Hopper Capacity		



Hoppmann Corporation strives to improve its products and reserves the right to change or discontinue specifications & designs shown in this brochure without notice and without incurring obligation. 05/05

Fujicon Engineering Pte Ltd

◆ No. 2, Tuas Link 1, Jurong Industrial Estate, Singapore 638590
◆ Tel: (65) 6863 4011 ◆ Fax: (65) 6863 4022 ◆ Email: info@fujicon.com.sg
www.fujicon.com.sg